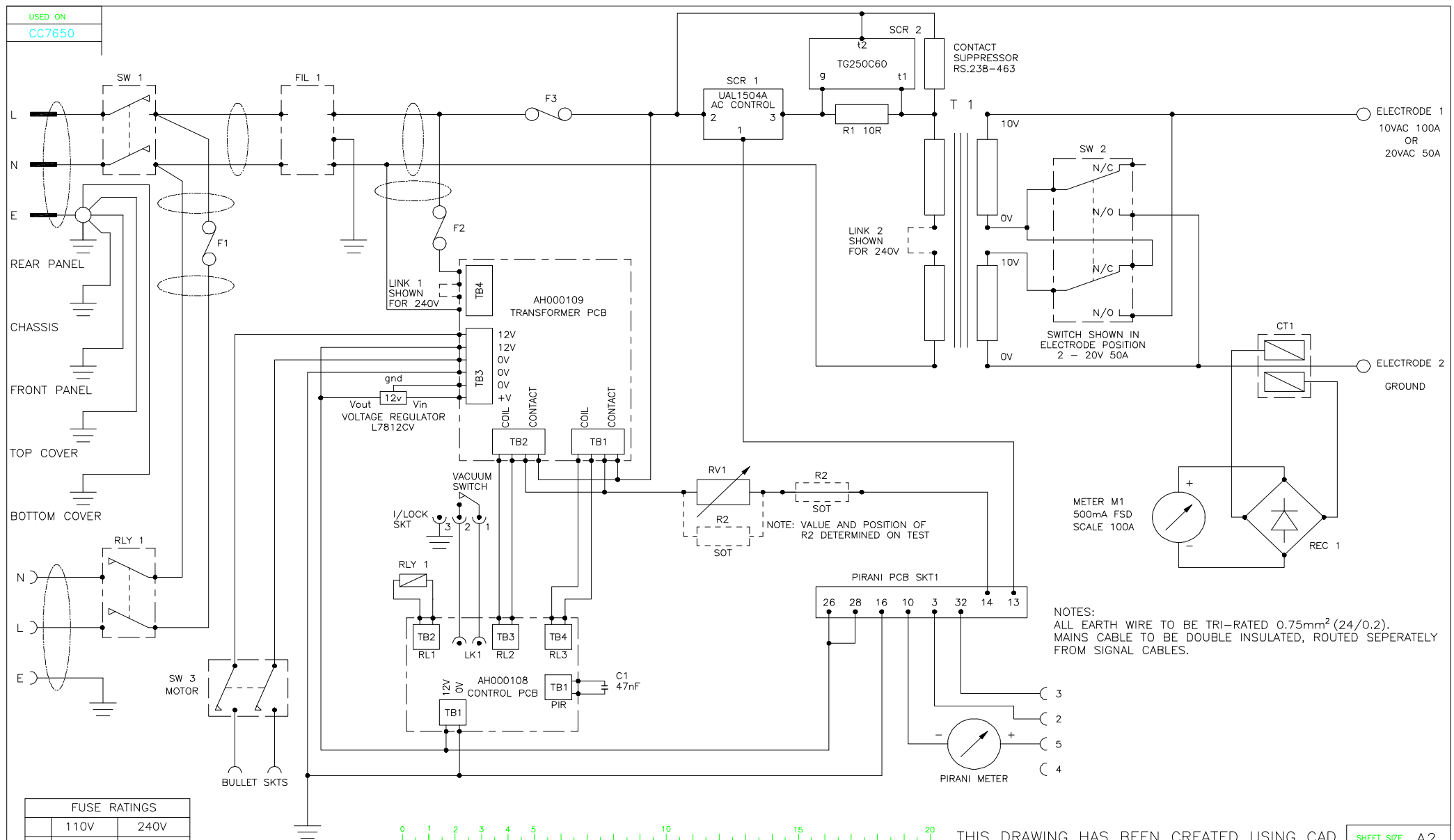


USED ON
CC7650



FUSE RATINGS	
110V	240V
F1 15A T	10A T
F2 3A T	2A T
F3 10A FF	5A FF

THIS DRAWING AND ANY INFORMATION OR DESCRIPTIVE MATTER SET OUT HEREON ARE THE CONFIDENTIAL AND COPYRIGHT PROPERTY OF FISON'S PLC AND MUST NOT BE DISCLOSED, LOANED, OR COPIED IN WHOLE OR PART OR USED FOR MANUFACTURING, TENDERING, OR FOR ANY OTHER PURPOSE WITHOUT THEIR WRITTEN PERMISSION.

DO NOT SCALE DRAWING		REMOVE ALL BURRS		FOR EXPLANATION OF DIMENSIONS, TOLERANCE, NOTES ETC. SEE BS 308 (MECHANICAL) OR BS 3939 (ELECTRONICS)			
MODIFICATION	DATE	ISS	MODIFICATION	DATE	ISS	ENG	D.J.C
			ZB1155	8.5.96	4	DRN	D.J.C
			ZB1147	21.3.96	3	PASSED	C.R.C
			ZB1136	9.2.96	2	APP'D	P.J.B
ZB1190	13.5.97	5	ORIGINAL	4.12.95	1		

UNLESS OTHERWISE STATED
DIMENSIONAL TOLERANCE:-
0 ± 1mm
0.0 ± 0.2mm
0.00 ± 0.1mm
GEOMETRICAL FORM TO BE WITHIN ABOVE DIMENSIONAL TOLERANCE.
ANGULAR TOLERANCE ± 0° 30'
DRILLED HOLE ± 0.05mm
SURFACE FINISH 1.6µm
DIMENSIONS IN MILLIMETERS

PROJECTION - - IF IN DOUBT - ASK
MATERIAL - FINISH -
FISON'S PLC. VG MICROTECH/VG QUADRUPOLES.
DRAWING No. 1 OF 1

THIS DRAWING HAS BEEN CREATED USING CAD SHEET SIZE A2
SCALE 1:1 TITLE CC7650 WIRING DIAGRAM
DRAWING No. 1 OF 1 HF765001C