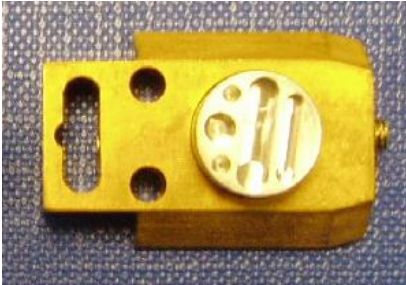


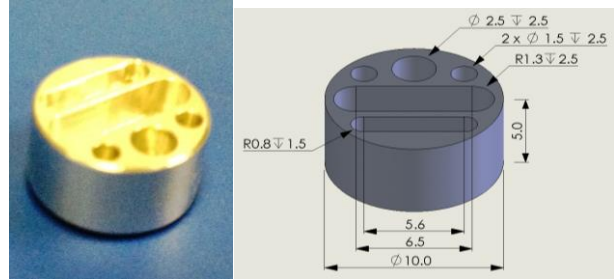


Quorum PP3000T/PP3010T shuttles and stubs

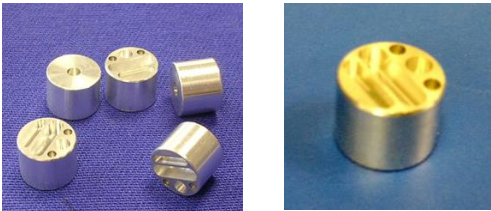
There are many styles of shuttles and stubs available for the PP3000T and PP3010T. Specific holders can be designed on request.



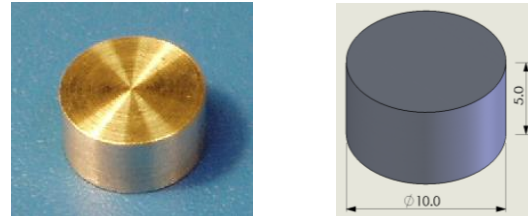
AL200077B
Specimen shuttle (with 11541 universal stub).
Supplied as standard



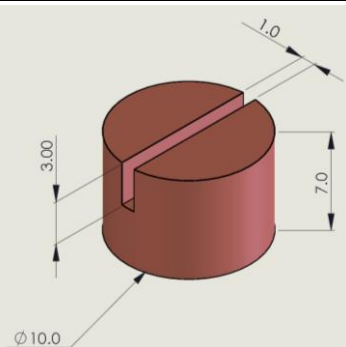
11541-5
Universal cryo stubs (multi-stub). 10mm diameter x 5mm high. Packet of five



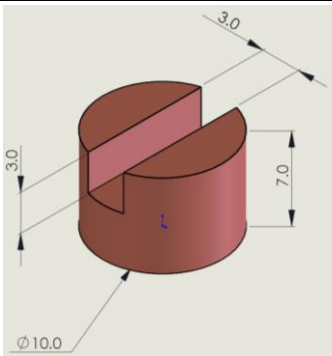
E7449-5
Universal cryo stubs (multi-stub). 10mm diameter x 7.5mm high. Packet of five



Blank specimen stub (5mm high).
E7402 = aluminium **E7403** = copper
(Packet of 10)



E7407
Copper stub with 1mm wide x 3mm deep slot.
Packet of 5

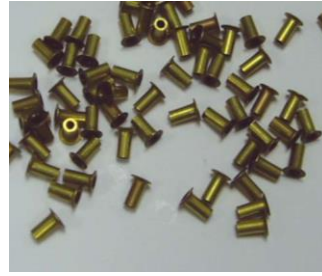


E7406
Copper stub with 3mm wide x 3mm deep slot.
Packet of 5



E7405

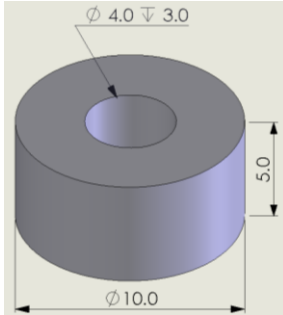
Clamping stub. Useful for flat, hard specimens. Clamping can be from both sides (as above) or by from one side only (by removing one clamp)



328116510

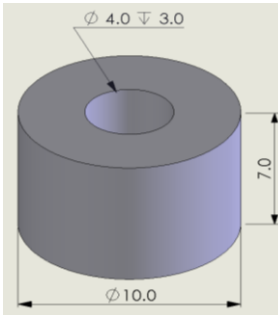
Freezing rivets for liquids. If mounted raised from the specimen stub can give faster freezing. Can be used singularly (with the

liquid placed as a drop on the top) or as two face to face (held together by glue or wax or for more viscous liquids by surface tension. Packet of 100)



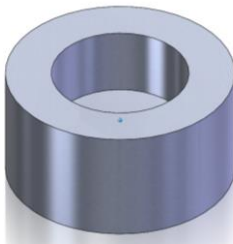
E7447

5mm high stub with single hole (4mm \varnothing x 5mm)



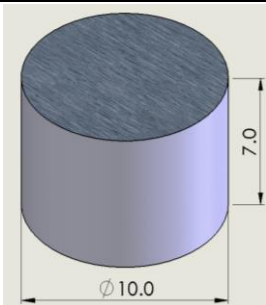
E7448

5mm high stub with single hole (4mm \varnothing x 5mm)



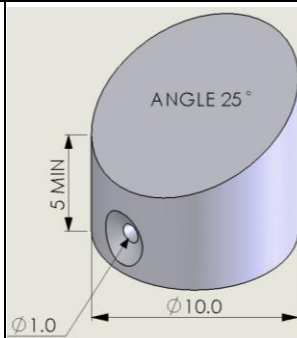
13736

“Ice cream” stub. Ideal for working with large pre-frozen specimens, such as ice cream. 5 mm high stub with single hole (6mm \varnothing x 3mm deep)



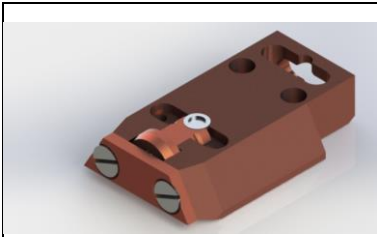
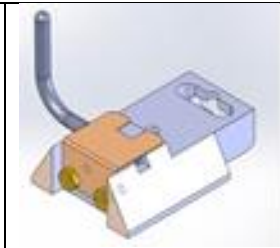


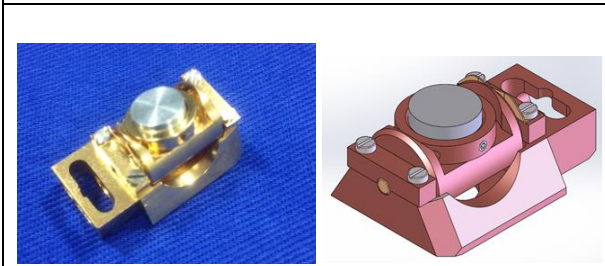
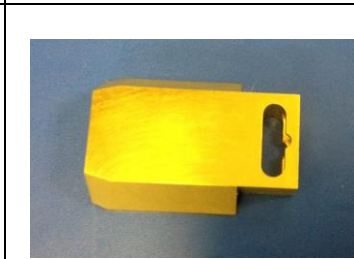
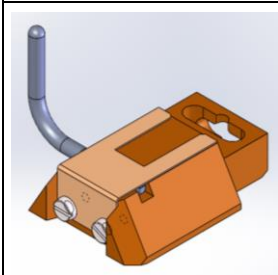
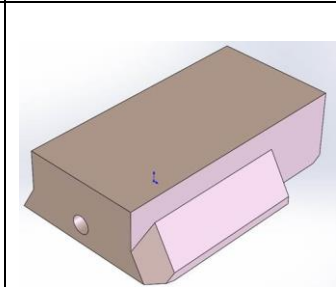
12442

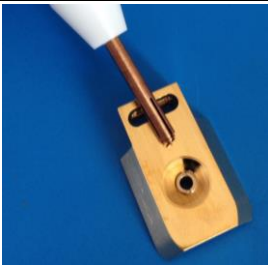
7mm high stub with roughen surface



10694

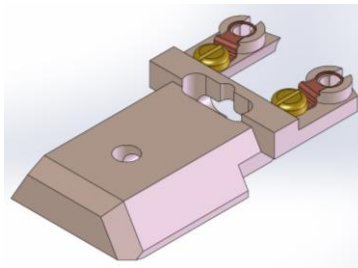
Angled stub

 <p>13054 Shuttle for high pressure freezer “top hat” (3mm) specimen holders. Can also be used to clamp small flat specimens.</p>	 <p>10245 Shuttle for Balzer-style freeze-fracture specimen planchettes. Can also be used to clamp small flat specimens</p>
 <p>20530 Rivet shuttle (bayonet fitting)</p>	 <p>20529 Shuttle for 10mm stub (shown with E7433 rivet stub). Bayonet fitting</p>
 <p>13419 Tilt-rotate shuttle. Tilt and rotation can be altered on the preparation chamber cold stage using system knife/probe.</p>	 <p>12434 Blank shuttle. Useful for large or multiple specimens. Can be tailored by the user for specific specimens</p>
 <p>12013 For clamping, larger flat specimens (handle removed after loading specimen). Useful for loading pre-frozen specimens</p>	 <p>20718 Extended length blank shuttle. Useful for large or flat specimens (e.g. plant leaves). Can be tailored by the user for specific specimens</p>



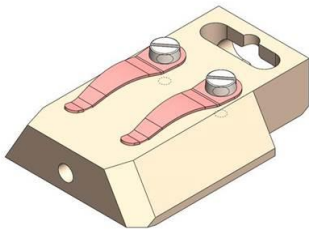
13359

STEM shuttle for 3mm grid. For STEM detectors mounted below the SEM cold stage. (Shown with grid locating tool).



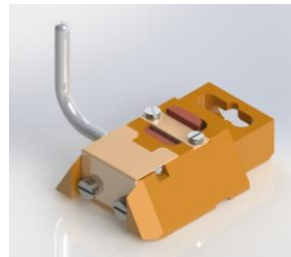
11477

Zeiss STEM shuttle for two 3mm grids. Note: for use with side-entry Zeiss STEM detectors only.



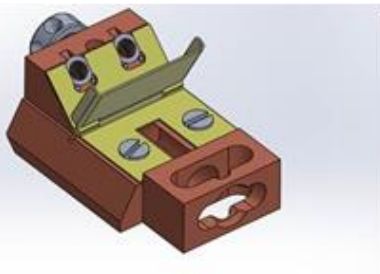
20720

Shuttle for large, flat specimens (with light microscope style stage clips)



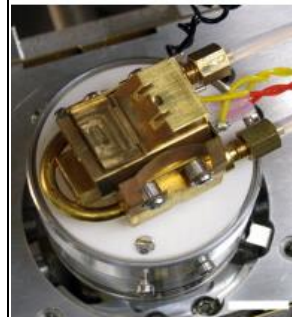
13524

Shuttle for clamping hard, flat specimens. Suitable for flat specimens (front of shuttle shown with clamp lever) and cross-fracturing (sprung-loaded vice).

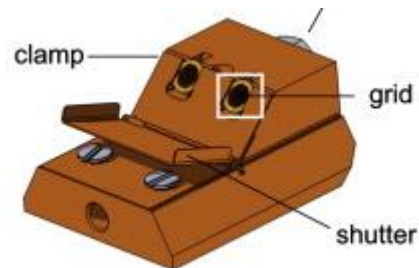


12406

Shuttle to hold two TEM autogrids™ for cryo-FIB/SEM applications. Includes cold shield (shutter) which is closed during transfer and then opened once in the microscope by briefly inverting the shuttle. autogrids™ not supplied

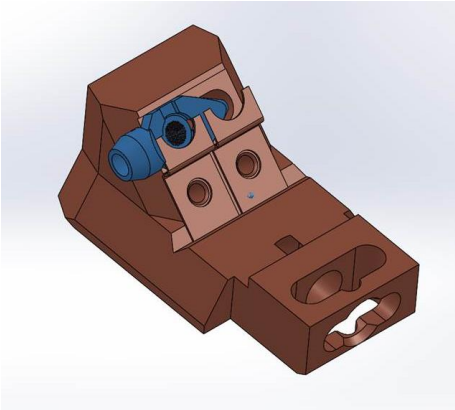


12406 shown mounted on the PP3000T /PP3010T cold stage.



12922

Cryo shuttle for FEI Polara™ cartridge



25276

Clamping shuttle for large, hard specimens

