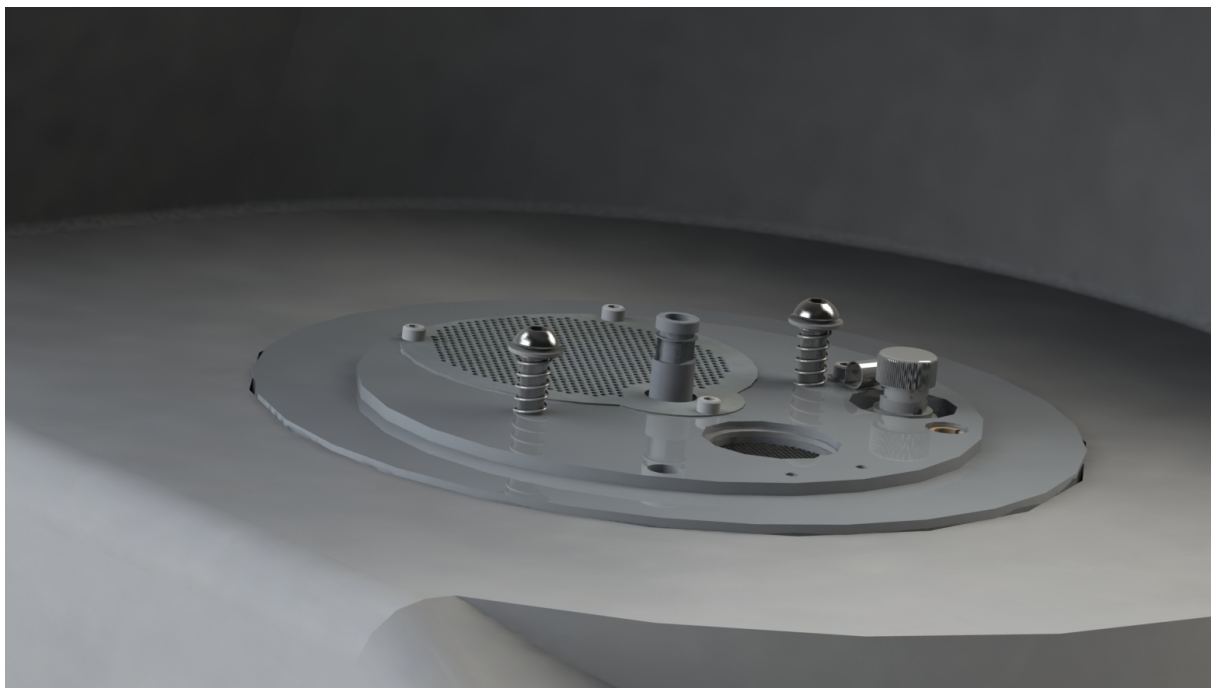




## Installing Shield assembly 026861 into Q150 T

The purpose of the shield assembly is to protect the base plate and turbo pump port from coating debris. The Shield has to be fitted at installation after the long transit screws which hold the top plate secure have been removed. The shield fits into the screw holes used for the transit screws.

- Take the two hexagon socket headed screws and feed a flat M6 washer (Item 3) followed by a Spring (item 2) onto each screw.
- Screw the assembled screws into the M6 threaded holes in the base plate so that the washer is approx. 15mm above the base plate. The screw does not need to be tight.



- The Shield is then placed over the screw heads which should align with the keyhole slots then while pressing down lightly compressing the spring, carefully slide the plate towards the front of the coater.
- The assembly is now complete and the shield can be removed easily for cleaning.

