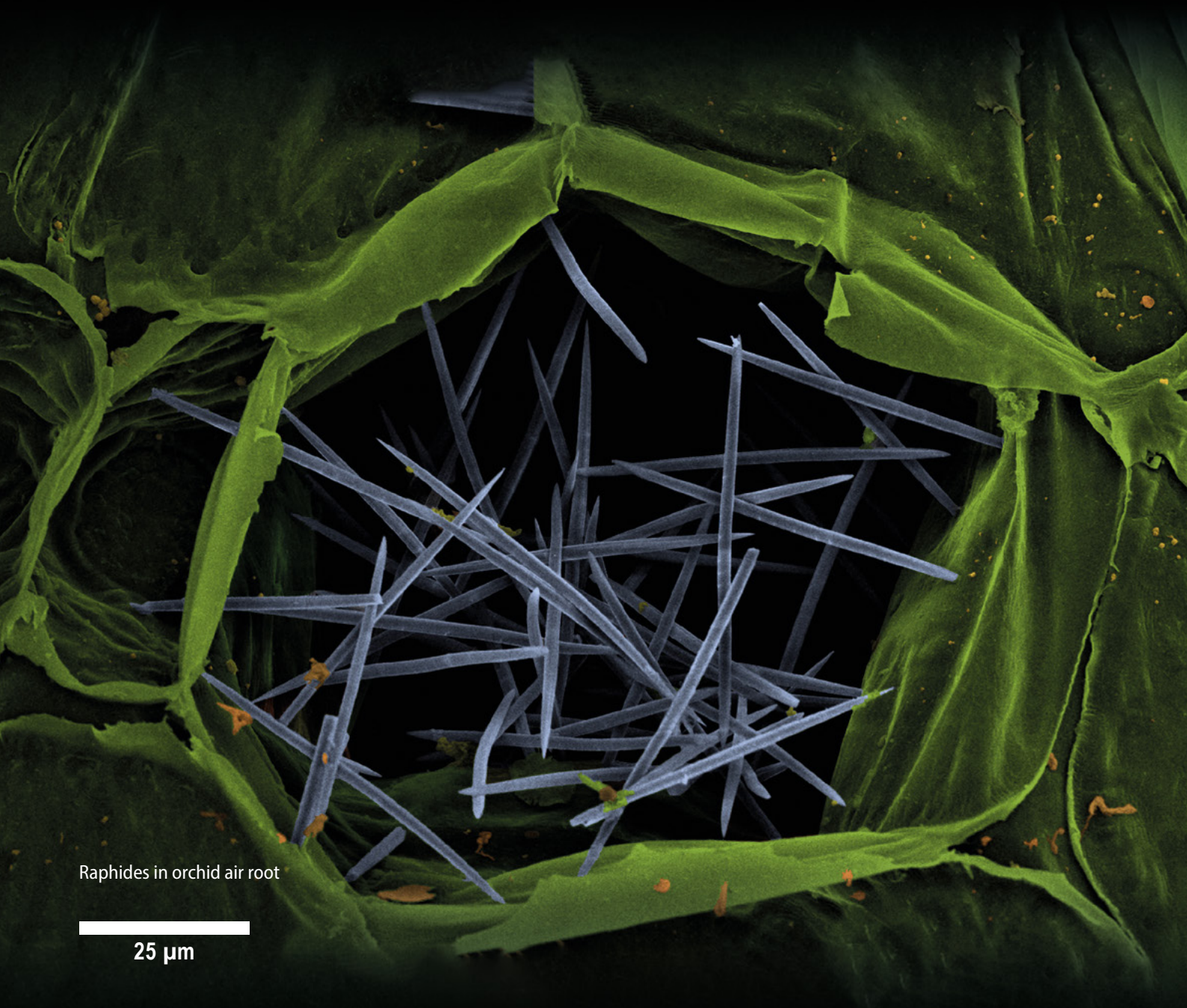


Quorum

CPD



Raphides in orchid air root

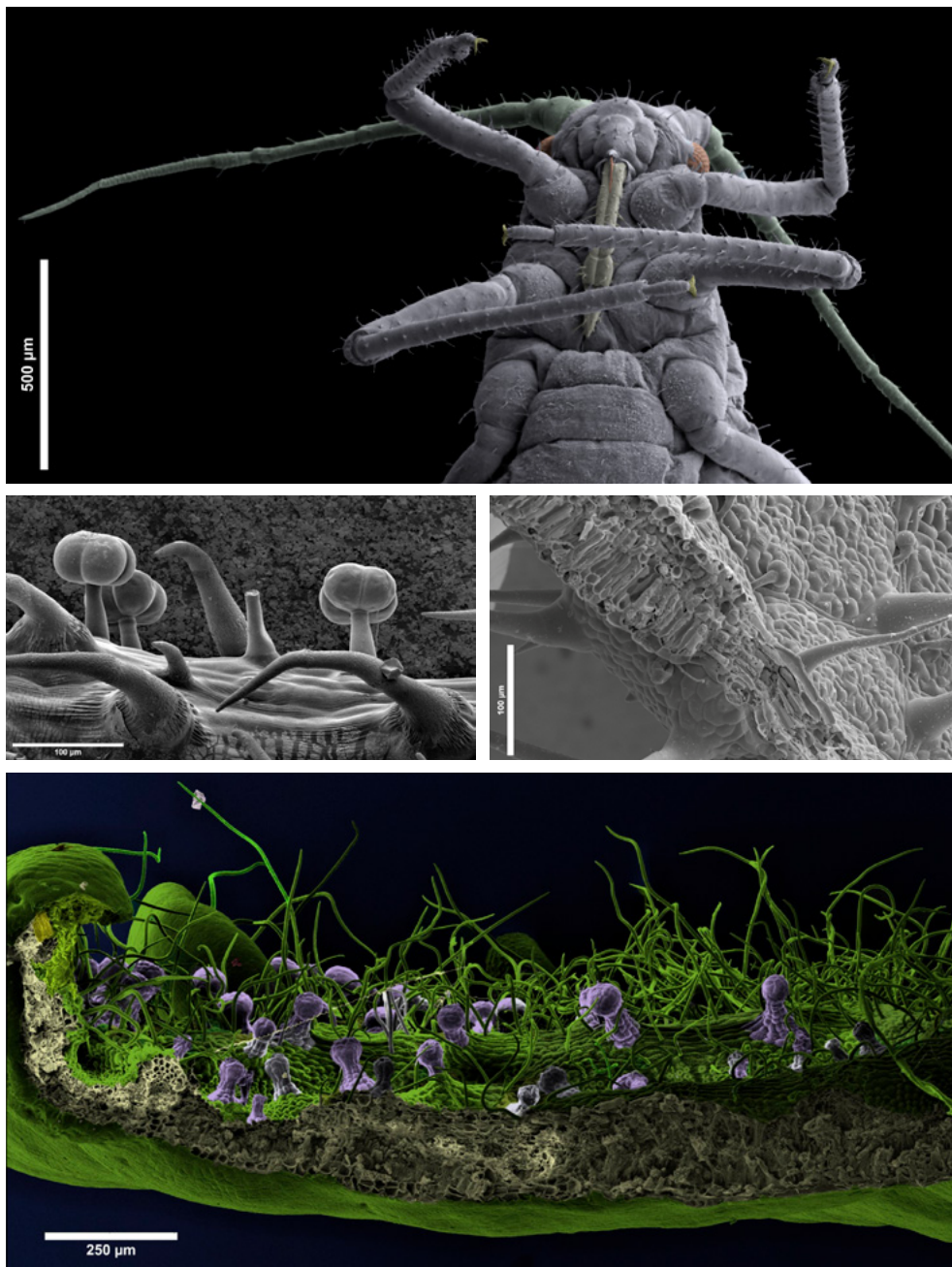
25 μ m

SPECIALISTS IN ELECTRON MICROSCOPY SAMPLE PREPARATION EQUIPMENT
E: SALES@QUORUMTECH.COM • T: +44 (0) 1323 810981 • W: QUORUMTECH.COM

Quorum Technologies full range of Critical Point Dryers (CPD)



Quorum offers a range of Critical Point Dryers (CPD) to meet the needs of SEM specimen preparation, silicon wafer and MEMS drying applications. CPD (sometimes called supercritical drying) is an established method of dehydrating biological tissue prior to examination in a Scanning Electron Microscope (SEM). Please note, specimens need to be suitably prepared prior to the CPD process, see quorumtech.com for more details.



FOR FULL SPECIFICATIONS CONTACT OUR SALES TEAM ON
SALES@QUORUMTECH.COM +44 (0) 1323 810981 OR VISIT WWW.QUORUMTECH.COM



Specifications

Instrument Dimensions

◆ W 450 mm x H 325 mm x D 505 mm

Weight

◆ 35 kg

Specimen holders

◆ AL800019-1 specimen holder as standard

Safety

◆ Built-in safety devices in both hardware and software, including relief valves, level sensors, pressure switches and programming restraints

Chamber diameter

◆ 60mm Ø

Internal chamber height

◆ 59 mm, usable chamber height = 34.5 mm, usable chamber volume = 97.5 ml

Critical point dryer liquid carbon dioxide (CO₂) requirements

◆ All models require a cylinder of liquid CO₂ fitted with a siphon tube (normally indicated by a vertical white stripe on the cylinder). If there is any doubt regarding the presence of a siphon tube, advice should be sought from the supplier.



Please contact our sales team at sales@quorumtech.com for full pricing.

K850

The K850 combines versatility and ease of operation. The vertical pressure chamber allows for a clear view of the liquid meniscus during processing.

Features and benefits

- ⇒ Built-in adiabatic cooling with liquid CO₂
- ⇒ Thermoelectric heating
- ⇒ Fine control needle valve for pressure release
- ⇒ Side viewing chamber port
- ⇒ Temperature monitoring and control with thermal cut-out protection
- ⇒ Pressure monitoring with safety cut-out for over pressure
- ⇒ Easy to operate valves
- ⇒ Chamber: vertical, diameter 32mm, height 47mm with glass viewing port and safety shield
- ⇒ Magnetic stirrer located in the base of the chamber

K850 Ordering Information

Options and accessories

- ⇒ AL800019-1 Standard specimen holder with 12 individual specimens wells (each 8mm Ø x 8 mm H)
- ⇒ EK4130 Holder for bulk specimens (a single large specimen container)
- ⇒ EK4135 Glass microscope coverslip holder
- ⇒ EK4141 TEM specimen grid holder
- ⇒ EK4145 Holder for porous specimen pots and 3 x pots 12.7mm x 15.5mm for small or delicate specimens
- ⇒ CPD800A Porous specimen pots 12.7 mm x 15.5 mm (pack of 10 for small delicate specimens)

For more options available please contact
sales@quorumtech.com



FOR FULL SPECIFICATIONS CONTACT OUR SALES TEAM ON
SALES@QUORUMTECH.COM +44 (0) 1323 810981 OR VISIT WWW.QUORUMTECH.COM

K850 WM

The K850WM is a compact, bench-top instrument designed to critical point dry a complete 6"/152 mm wafer. A convenient wafer holder allows rapid transfer and ensures that pre-drying does not occur.

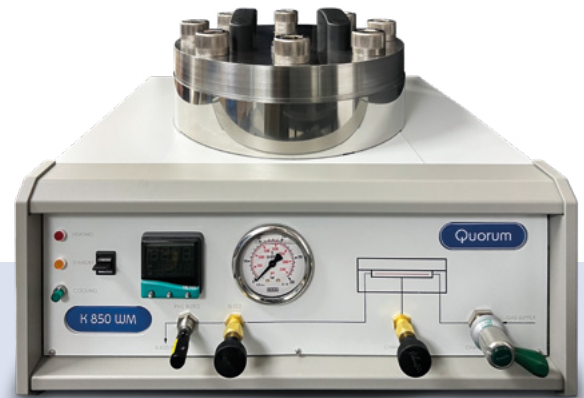
- ❖ Vertical chamber with top-loading and bottom-draining
- ❖ Thermo electric heating
- ❖ Fine control needle valve pressure release
- ❖ Temperature monitoring with safety cut-out for over pressure
- ❖ Easy to remove wafers from the chamber

Ordering Information

- ❖ Chamber size: 32 mm Ø x 47 mmH in dimension
- ❖ Chamber: vertical, diameter 32mm, height 47mm
- ❖ Large chamber critical point dryer for 4" or 6" wafers

For a complete working system the following is required:

- ❖ E4860 Recirculating heater/chiller for cooling chamber (please specify voltage)
- ❖ EK3102 Carbon dioxide bottle heating system. Allows faster filling of liquids CO₂ especially if the cylinder is stored in a cool environment



E3100

The E3100 large critical point dryer has been the industry standard for over 35 years and is used in numerous SEM laboratories around the world. Primarily used for the processing of life-sciences and geological specimens, the E3100 can also be used for the controlled drying of MEMS and aerogels.

Features and Benefits

- ❖ Economical to run
- ❖ Simple robust construction
- ❖ Horizontal chamber
- ❖ Large, robust valves for draining of fluids, ingress of liquid CO₂ and venting of gas
- ❖ Specimen handling - Temperature controlled by hot water (mains or E4860)

Other options and accessories

- ❖ E3100-01 Specimen holder (boat). Included as standard with the E3100
- ❖ E3100 -02 Specimen holder (boat) for microscope coverslips
- ❖ E300-01 Holder for 3.05 mm TEM specimen grids
- ❖ CPD800A Porous pots with lids, 12.7 mm x 15.5 mm - E4860 Recirculating Heater Chiller to control heating and cooling cycles

Ordering Information

- ❖ Chamber: Horizontal, internal diameter at 63.5mm by 82mm length
- ❖ Critical Point Dryer E3100 is supplied with an E3100-01 specimen holder (boat)
- ❖ E3100 is supplied with 1 meter liquid CO₂ delivery tube (pack of 10) for small or delicate specimens



FOR FULL SPECIFICATIONS CONTACT OUR SALES TEAM ON
SALES@QUORUMTECH.COM +44 (0) 1323 810981 OR VISIT WWW.QUORUMTECH.COM



HEADQUARTERS

Quorum Technologies

Judges House
Lewes Road
Laughton
East Sussex
BN8 6BN
United Kingdom

T: +44 1323 810981

E: sales@quorumtech.com

W: www.quorumtech.com



Products are for research use only.

While every effort is made to ensure accuracy, no responsibility can be accepted for errors or omissions. Data may change, as well as legislation and you are strongly advised to obtain copies of the most recently issued regulations, standards and guidelines. This document does not form the basis of a contract. Quorum has a policy of ongoing product improvement and reserves the right to change specifications without notice © 2023 Quorum Technologies Limited. All rights reserved.

SPECIALISTS IN EM SAMPLE PREPARATION

E: sales@quorumtech.com • **W:** quorumtech.com